

Microwave measurement device
Continuous In-Line measurement of dry matter or consistency

HK1 Series



Harrer & Kassen GmbH
Am Heschen 4 - 6
D - 75328 Schömburg—Langenbrand

Tel.: +49 (0)7084/9248-0
Fax: +49 (0)7084/9248-29
www.harrerkassen.com
info@harrerkassen.com

Description:

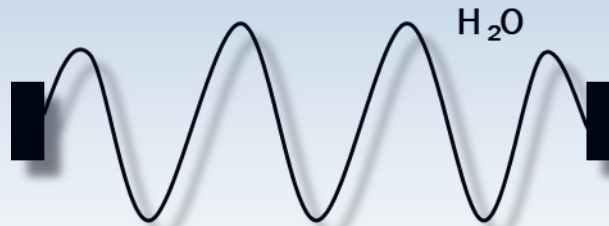
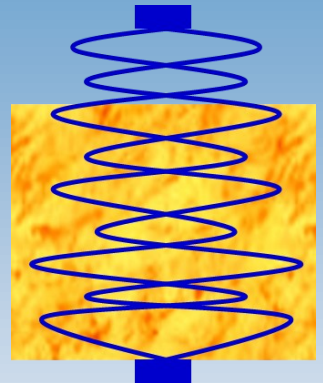
At the microwave measurement technology an electromagnetic wave with very low energy is generated. This signal is coupled via an antenna into the product (Cellulose, Cheese, Milk, Curd, etc.).

Depending on the dielectric properties of the product the signal propagates in the product. After the signal has passed the product a second antenna receives the signal (Transmission).

Amplitude and phase shift of the received signal are an expression for the consistency, water content or dry matter of the product.

The microwave measurement is very stable and it has a quick response to product changes.

Transmissions signal passes through an in-homogenous product



**Conditions for a successful measurement:
The product contains NO SALT, NO METAL and
conductivity < 1mS between the antennas!**

The measured values of the H₂O- or dry-matter content are available as digital and analogue values.

The HK-instruments are applicable in different production processes and in different production lines as continuous In-Line-measurement.

Because of further increasing quality requirements after ISO and EU standards, the industries have an enhanced demand for improved quality control, standardization and In-Line-trend observation.

Advantages:

- State-of-the-art microwave technology
- Real time measurement
- Continuous monitoring over the whole production
- Production with constant and documentable quality
- Modular design provide robust measurement
- Early detection of fail production
- Vibrations do not effect the measurement results
- Remote from PC or with separate remote control
- Easy calibration through one point calibration
- Non- destructive measurement
- No moving parts
- No wear
- Maintenance free

HK1-Mp for Consistency measurement



For projecting:

- Pressure in the pipe
- Minimal and maximal dry matter of the product
- Riser preferred
- Conductivity

Real time measurement of:

- %TS, g/l, mg/l, or g/cm³

Pin-Antennas:

Size: Ø 16 x 195 mm

Flange:

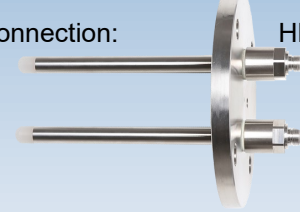
Standard DN65 / PN6

Cleaning: DN65 / PN16

Other Flange on request

Material: Stainless steel, PEEK

Connection: HF- Cables



Short 3A-Stabsensoren

Size : Ø 30 x 86 mm

Material: Stainless steel, PEEK

Connection: HF-Cables

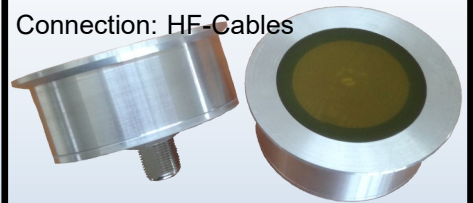


3A Spiral antennas

Size: Ø 75 x 33 mm

Material: Aluminum, Stainless steel, FR4

Connection: HF-Cables



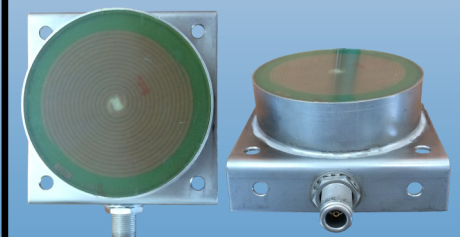
Spiral antennas

Size: Ø 80 x 25 mm

Mounting: 84 x 84 x 36 mm

Material: Stainless steel, FR4

Connection: HF-Cables



HK1-M for Milk, Curt, Topfen measurement



For projecting:

- Pressure in the pipe
- Minimal and maximal dry matter of the product
- Riser is necessary

Real time measurement of:

- Dry matter / Water content

Antennas:

- 3A Spiral antennas
- short 3A Pin-Antennas

HK1-C-3A for Butter, Mozzarella measurement



For projecting:

- Pressure in the pipe
- Minimal and maximal dry matter of the product
- Riser preferred
- Minimum diameter pipe DN125

Real time measurement of:

- Dry matter / Water content

Evaluation unit

Technical data evaluation unit HK1-MC und HK1-M:

Housing:	Stainless steel
Size H x W x D:	500 x 300 x 170 mm
Weight:	ca. 15 kg
Protection Type:	IP66 / NEMA 4
Power supply:	100 - 240 V/AC optional 24V/DC – 50/60 Hz – max. 200mA
PC-interface:	RS232 or RS485
2 Analog outputs:	0/4 - 20mA / isolated 1500V
1 Analog input:	0/4 - 20mA / isolated 1500V
1 Relays contact:	max. 5A / 250V
Digital - input:	Ext. selection: 16 Products / Start / Stop
Operating:	membrane keypad
Display:	2x24 Sign LCD, LED– backlight
Environmental temp.:	-20°C - +85°C
PROFI-Bus/ Net/ Modbus TCP:	optional

Directives:

The HK1 is CE- conform, according to the followings directives:

- EMC directives 2014/30/EU:
 - generic standards EN 61000-6-2
 - generic standards EN 61000-6-4
- Low- voltage directives 2014/35/EU
- RoHS directives 2011/65/EU

Scope of supply:

All HK1 are supplied with sensors / antennas and evaluation unit.
At the commissioning, the operating personal gets a device instruction / training.

Technical data evaluation unit HK1-C-3A:

Housing:	Aluminum die casting
Size H x W x D:	180 x 180 x 100 mm
Weight:	ca. 7 kg
Protection Type:	IP65 / NEMA 4
Power supply:	100 - 240 V/AC optional 24V/DC – 50/60 Hz – max. 200mA
PC– interface:	RS232 or RS485
2 Analog outputs:	0/4 - 20mA / isolated 1500V
Environmental temp.:	-20°C - +85°C
Product temperature:	0°C - 130°C
PROFI-Bus/ Net/ Modbus TCP:	optional

Remote control:

Size H x W x D:	200 x 120 x 64 mm
Operation:	membrane keypad
Display:	2x24 Sign LCD, LED– backlight

Technical data evaluation unit HK1-Mp:

Housing:	Aluminum die casting
Size H x W x D:	230 x 200 x 100 mm
Weight:	ca. 5 kg
Protection Type:	IP65 / NEMA 4
Power supply:	100 - 240 V/AC optional 24V/DC – 50/60 Hz – max. 200mA
PC-interface:	RS232 or RS485
2 Analog outputs:	0/4 - 20mA / isolated 1500V
1 Analog input:	0/4 - 20mA / isolated 1500V
1 Relays contact:	max. 5A / 250V
Temperature sensor:	TP100
Digital - input:	Ext. selection: 16 Products / Start / Stop
Operating:	6 in membrane keypad integrated soft keys
Display:	2x24 Sign LCD, LED– backlight
Environmental temp.:	-20°C - +85°C
PROFI-Bus/ Net/ Modbus TCP:	optional